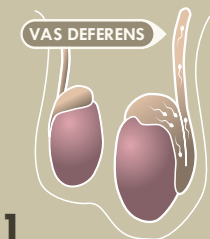


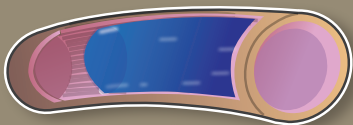
How does Vasalgel™ work?



Sperm produced in the testes are transported through a vessel called the vas deferens.

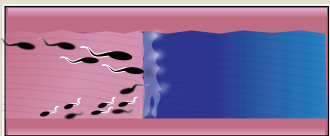
2

Vasalgel fills the interior of the vas deferens, forming a gel barrier that nestles into the tiny folds in the vessel's walls.



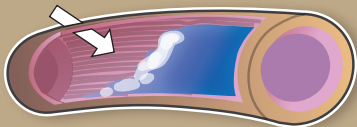
3

Sperm, which are too large to traverse the gel barrier, are absorbed by the body.



4

Vasalgel is removed with an injection of a dissolving solution.



5

Fertility is restored as normal sperm flow resumes.

